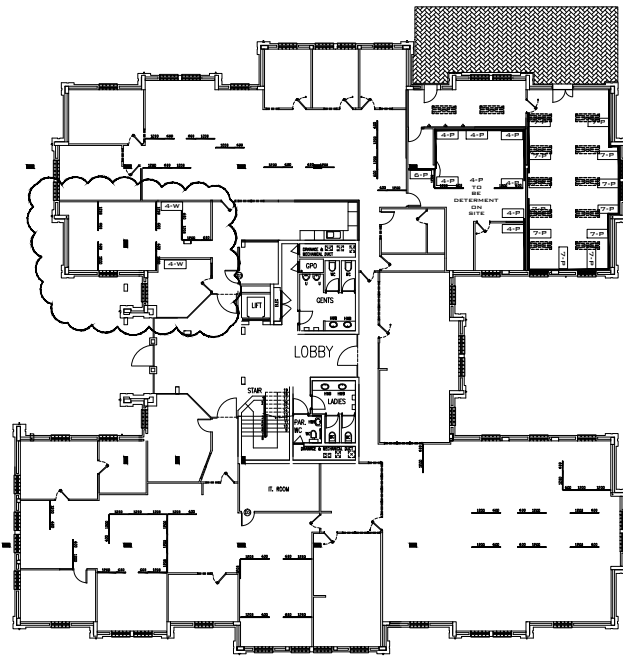


The floor plan of the second floor of the University of Illinois at Chicago is a complex layout. It features a central 'LOBBY' area with a 'STAIR' and 'UP' arrow. To the left of the lobby is a 'GENTS' restroom and a 'LIFT'. To the right is a 'LADIES' restroom and a 'STAIR'. The plan includes numerous rooms, some labeled with room numbers (e.g., 200, 201, 202, 203, 204, 205, 206, 207, 208, 209, 210, 211, 212, 213, 214, 215, 216, 217, 218, 219, 220, 221, 222, 223, 224, 225, 226, 227, 228, 229, 230, 231, 232, 233, 234, 235, 236, 237, 238, 239, 240, 241, 242, 243, 244, 245, 246, 247, 248, 249, 250, 251, 252, 253, 254, 255, 256, 257, 258, 259, 260, 261, 262, 263, 264, 265, 266, 267, 268, 269, 270, 271, 272, 273, 274, 275, 276, 277, 278, 279, 280, 281, 282, 283, 284, 285, 286, 287, 288, 289, 290, 291, 292, 293, 294, 295, 296, 297, 298, 299, 300, 301, 302, 303, 304, 305, 306, 307, 308, 309, 310, 311, 312, 313, 314, 315, 316, 317, 318, 319, 320, 321, 322, 323, 324, 325, 326, 327, 328, 329, 330, 331, 332, 333, 334, 335, 336, 337, 338, 339, 340, 341, 342, 343, 344, 345, 346, 347, 348, 349, 350, 351, 352, 353, 354, 355, 356, 357, 358, 359, 360, 361, 362, 363, 364, 365, 366, 367, 368, 369, 370, 371, 372, 373, 374, 375, 376, 377, 378, 379, 380, 381, 382, 383, 384, 385, 386, 387, 388, 389, 390, 391, 392, 393, 394, 395, 396, 397, 398, 399, 400, 401, 402, 403, 404, 405, 406, 407, 408, 409, 410, 411, 412, 413, 414, 415, 416, 417, 418, 419, 420, 421, 422, 423, 424, 425, 426, 427, 428, 429, 430, 431, 432, 433, 434, 435, 436, 437, 438, 439, 440, 441, 442, 443, 444, 445, 446, 447, 448, 449, 450, 451, 452, 453, 454, 455, 456, 457, 458, 459, 460, 461, 462, 463, 464, 465, 466, 467, 468, 469, 470, 471, 472, 473, 474, 475, 476, 477, 478, 479, 480, 481, 482, 483, 484, 485, 486, 487, 488, 489, 490, 491, 492, 493, 494, 495, 496, 497, 498, 499, 500, 501, 502, 503, 504, 505, 506, 507, 508, 509, 510, 511, 512, 513, 514, 515, 516, 517, 518, 519, 520, 521, 522, 523, 524, 525, 526, 527, 528, 529, 530, 531, 532, 533, 534, 535, 536, 537, 538, 539, 540, 541, 542, 543, 544, 545, 546, 547, 548, 549, 550, 551, 552, 553, 554, 555, 556, 557, 558, 559, 560, 561, 562, 563, 564, 565, 566, 567, 568, 569, 570, 571, 572, 573, 574, 575, 576, 577, 578, 579, 580, 581, 582, 583, 584, 585, 586, 587, 588, 589, 590, 591, 592, 593, 594, 595, 596, 597, 598, 599, 600, 601, 602, 603, 604, 605, 606, 607, 608, 609, 610, 611, 612, 613, 614, 615, 616, 617, 618, 619, 620, 621, 622, 623, 624, 625, 626, 627, 628, 629, 630, 631, 632, 633, 634, 635, 636, 637, 638, 639, 640, 641, 642, 643, 644, 645, 646, 647, 648, 649, 650, 651, 652, 653, 654, 655, 656, 657, 658, 659, 660, 661, 662, 663, 664, 665, 666, 667, 668, 669, 670, 671, 672, 673, 674, 675, 676, 677, 678, 679, 680, 681, 682, 683, 684, 685, 686, 687, 688, 689, 690, 691, 692, 693, 694, 695, 696, 697, 698, 699, 700, 701, 702, 703, 704, 705, 706, 707, 708, 709, 710, 711, 712, 713, 714, 715, 716, 717, 718, 719, 720, 721, 722, 723, 724, 725, 726, 727, 728, 729, 730, 731, 732, 733, 734, 735, 736, 737, 738, 739, 740, 741, 742, 743, 744, 745, 746, 747, 748, 749, 750, 751, 752, 753, 754, 755, 756, 757, 758, 759, 760, 761, 762, 763, 764, 765, 766, 767, 768, 769, 770, 771, 772, 773, 774, 775, 776, 777, 778, 779, 780, 781, 782, 783, 784, 785, 786, 787, 788, 789, 790, 791, 792, 793, 794, 795, 796, 797, 798, 799, 800, 801, 802, 803, 804, 805, 806, 807, 808, 809, 810, 811, 812, 813, 814, 815, 816, 817, 818, 819, 820, 821, 822, 823, 824, 825, 826, 827, 828, 829, 830, 831, 832, 833, 834, 835, 836, 837, 838, 839, 840, 841, 842, 843, 844, 845, 846, 847, 848, 849, 850, 851, 852, 853, 854, 855, 856, 857, 858, 859, 860, 861, 862, 863, 864, 865, 866, 867, 868, 869, 870, 871, 872, 873, 874, 875, 876, 877, 878, 879, 880, 881, 882, 883, 884, 885, 886, 887, 888, 889, 890, 891, 892, 893, 894, 895, 896, 897, 898, 899, 900, 901, 902, 903, 904, 905, 906, 907, 908, 909, 910, 911, 912, 913, 914, 915, 916, 917, 918, 919, 920, 921, 922, 923, 924, 925, 926, 927, 928, 929, 930, 931, 932, 933, 934, 935, 936, 937, 938, 939, 940, 941, 942, 943, 944, 945, 946, 947, 948, 949, 950, 951, 952, 953, 954, 955, 956, 957, 958, 959, 960, 961, 962, 963, 964, 965, 966, 967, 968, 969, 970, 971, 972, 973, 974, 975, 976, 977, 978, 979, 980, 981, 982, 983, 984, 985, 986, 987, 988, 989, 990, 991, 992, 993, 9



SARS ELECTRICAL & I.T. INSTALLATION LEGEND

○ White Pipe	■ DRAINAGE	□ ELECTRICAL	■ TELEM. VIDEO FIBRE
● Isolates Floor	■ JTS FLOOR	■ Riser Pipe	■ DATA
■ Riser Pipe			

ELEC-Data-VOICE DRAWING LEGEND:

KEY	REQ.	DESCRIPTION	INSTALLED IN:	SPEC. DOC.
1-01	alarm	Ms. Spec. - Telson	442 Bm in w.railing	ELEC-HALTING-00
1-02	alarm	Ms. Spec. - Telson	2 Tronk Power. Storing	ELEC-PS-01
1-03	alarm	Ms. Spec. - Telson	442 Bm in Ceiling	ELEC-HALTING-00
2-01	alarm	Ms. Spec. - Telson	442 Bm in w.railing	ELEC-HALTING-00
2-02	alarm	Ms. Spec. - Telson	2 Tronk Power. Storing	ELEC-PS-01
2-03	alarm	Ms. Spec. - VSP	442 Bm in Ceiling	ELEC-HALTING-00
3-01	alarm	Typical Spec. - Telson	442 Bm in w.railing	ELEC-HALTING-00
3-02	alarm	Typical Spec. - Telson	2 Tronk Power. Storing	ELEC-PS-01
3-03	alarm	Typical Spec. - Telson	442 Bm in Ceiling	ELEC-HALTING-00
4-01	alarm	Typical Spec. - VSP	442 Bm in w.railing	ELEC-PS-01
4-02	alarm	Typical Spec. - VSP	2 Tronk Power. Storing	ELEC-PS-01
4-03	alarm	Typical Spec. - VSP	442 Bm in Ceiling	ELEC-HALTING-00
5-01	alarm	Custom Spec. - VSP	2 Tronk Power. Storing	ELEC-PS-01
5-02	alarm	Custom Spec. - VSP	442 Bm in w.railing	ELEC-PS-01
5-03	alarm	Custom Spec. - VSP	442 Bm in Ceiling	ELEC-HALTING-00
6-01	alarm	Printer/Fax VQW-2	442 Bm in w.railing	ELEC-PS-01
6-02	alarm	Printer/Fax VQW-2	2 Tronk Power. Storing	ELEC-PS-01
6-03	alarm	Printer/Fax VQW-2	442 Bm in Ceiling	ELEC-HALTING-00
7-01	alarm	Constant / M. Point	442 Bm in w.railing	ELEC-PS-01
7-02	alarm	Constant / M. Point	2 Tronk Power. Storing	ELEC-PS-01
7-03	alarm	Constant / M. Point	442 Bm in Ceiling	ELEC-HALTING-00
8-01	alarm	Fax Station - Telson	442 Bm in w.railing	ELEC-PS-01
8-02	alarm	Fax Station - Telson	2 Tronk Power. Storing	ELEC-PS-01
8-03	alarm	Fax Station - Telson	442 Bm in Ceiling	ELEC-HALTING-00
9-01	alarm	ELEC-PS-01	442 Bm in w.railing	ELEC-PS-01
9-02	alarm	ELEC-PS-01	2 Tronk Power. Storing	ELEC-PS-01
9-03	alarm	ELEC-PS-01	442 Bm in Ceiling	ELEC-HALTING-00
10-01	alarm	ADMT STAGING	442 Bm in w.railing	ELEC-PS-01
10-02	alarm	ADMT STAGING	2 Tronk Power. Storing	ELEC-PS-01
10-03	alarm	ADMT STAGING	442 Bm in Ceiling	ELEC-HALTING-00
11-01	alarm	ELEC-PS-01	442 Bm in w.railing	ELEC-PS-01
11-02	alarm	ELEC-PS-01	2 Tronk Power. Storing	ELEC-PS-01
11-03	alarm	ELEC-PS-01	442 Bm in Ceiling	ELEC-HALTING-00
12-01	alarm	ELEC-PS-01	442 Bm in w.railing	ELEC-PS-01
12-02	alarm	ELEC-PS-01	2 Tronk Power. Storing	ELEC-PS-01
12-03	alarm	ELEC-PS-01	442 Bm in Ceiling	ELEC-HALTING-00

10-01 CURVED LINE INDICATES LIFTING AT FLOOR BOTTLE / WALL / PARTITION TO
ELECTRICAL ROOM BOSS SUPPLY IT BE PULLED FROM

CABLE ROUTING

NOTES

- X PULSES MAX TO A SAMP RATE CIRCUIT BREAKER.
- PATCH ROOM I/O PULSES TO BE CONNECTED TO SERVER ROOM I/O.

NOTE TO PROJECT MANAGERS:

— NO GENERATOR POWER INDICATION ON THE ELECTRICAL DRAWING.
PLEASE DOUBLE-CHECK POWER REQUIREMENTS WITH THE OWNER AND THE ELECTRICAL ENGINEER.

AMENDMENT SCHEDULE	DATE	NO	AMENDMENT

SCALE 1:100 (A1)

DRAWN BY LS

ACC	MNGR	TH
-----	------	----

BUILD CODE HY0-01-PT

DWG NO lehae-H-00

PROJECT	FMP
---------	-----

AMEND NO



CLIENT APPROVAL SIGNATURE
AND DATE

Building Name	
---------------	--

BLOCK H

Drawing Description


ELEC-DATA-VOICE

Floor Level

LEVEL H-00



SPACE PLANNING &
BUILDING FACILITIES
MANAGEMENT

ACC MNGR	TH
BUILD CODE HY0-01-PT	
DWG NO	lehac-H-00
PROJECT	FMP
AMEND NO	
CLIENT APPROVAL SIGNATURE	